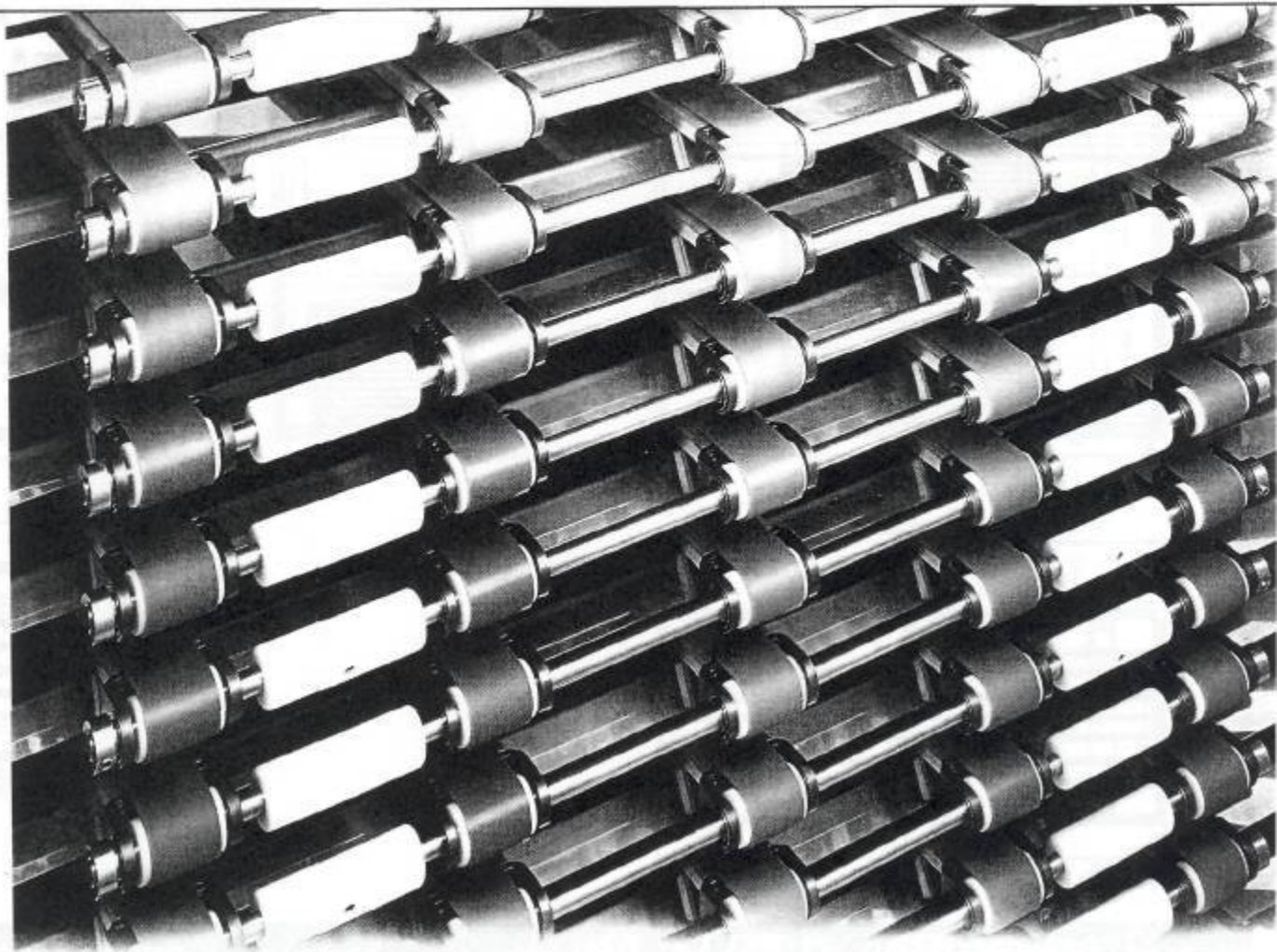


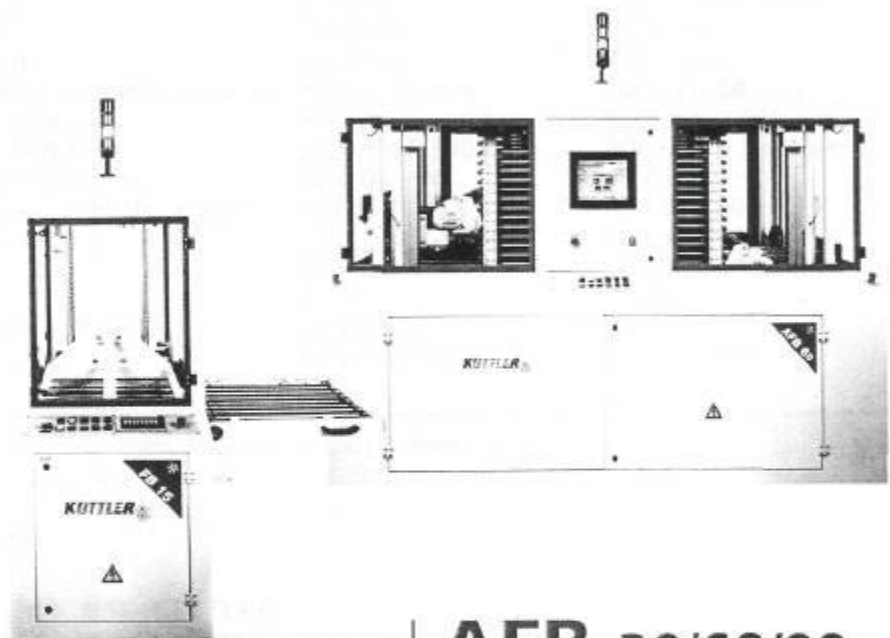


KUTTLER
AUTOMATION SYSTEMS

AFB



FB/TFB



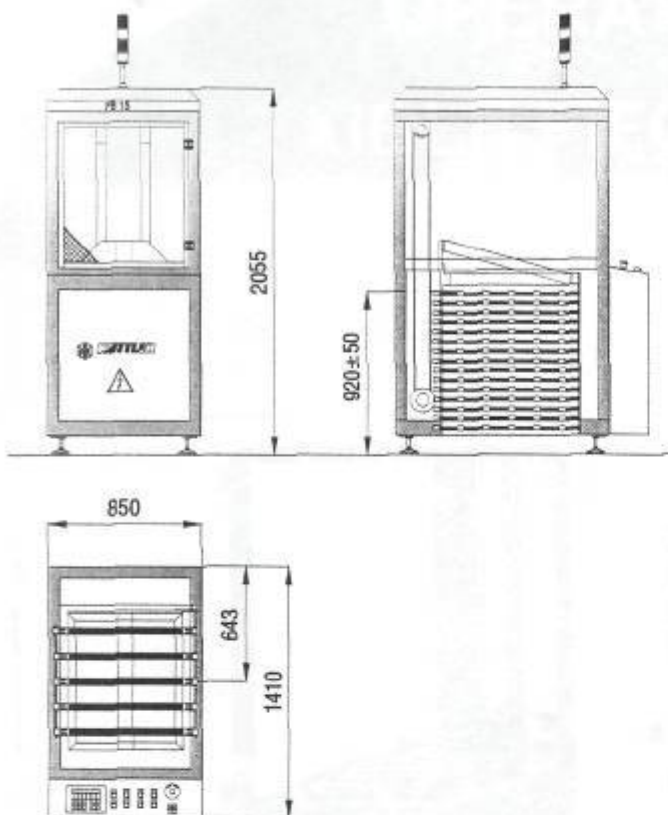
AFB 30/60/90
Flexible FIFO buffer systems

FB/TFB 10/15/20
FIFO buffer systems

■ Puffersysteme

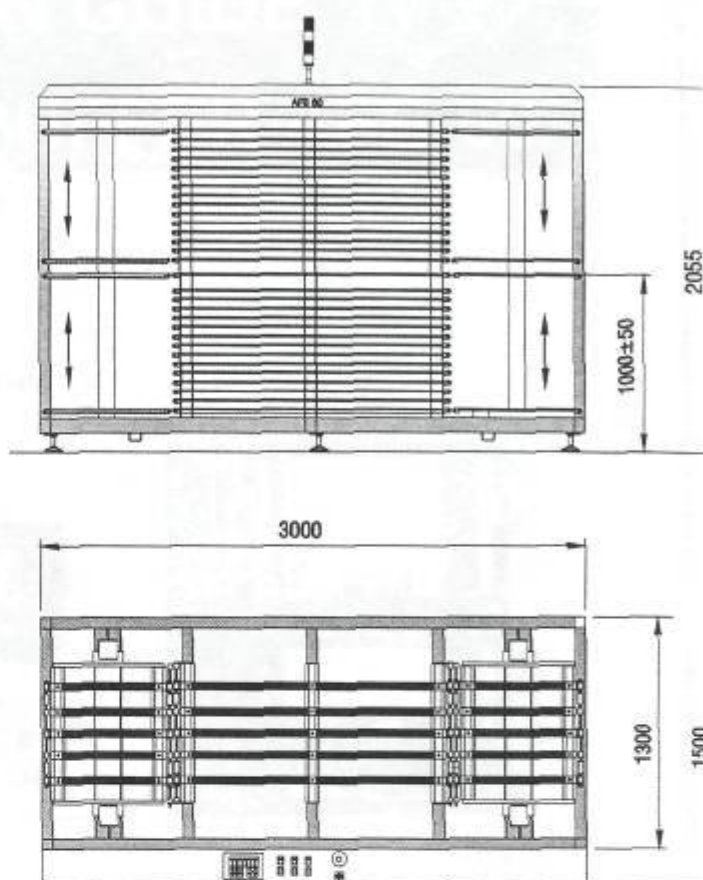
FB/TFB 15

Puffersysteme
FIFO buffer Systems



AFB 60

Flexibles Puffersystem
Flexible FIFO buffer System



Technische Daten

FB 15 | TFB 15

AFB 30/60/90

| | | | |
|--------------------------|----------------------------|--|---|
| Länge: | length: | 850 mm | 2690/3000/4000 mm |
| Breite: | width: | 1410 mm | 1500 mm |
| Höhe: | height: | 2055 mm | 2055 mm |
| Arbeitshöhe (Standard): | working height (Standard): | 920 +/- 50 mm | 1000 +/- 50 mm |
| Max. Plattenformat:* | max. PCB size:* | 650 mm x 650 mm | 650 mm x 650 mm |
| Min. Plattenformat: | min. PCB size: | 300 mm x 300 mm | 300 mm x 300 mm |
| Plattenstärke: | board thickness: | ab 0,05 mm | ab 0,05 mm |
| Anzahl der Pufferplätze: | number of buffer places: | 10/15/20 | 30/60/90 |
| Spannung: | main voltage: | 1 Ph 230 V,N,PE 50 Hz, 1.01 kW 4.3 A | 3 Ph 400 V,N,PE 50 Hz, 5,44 kW 13,6 A |
| Steuerspannung: | control voltage: | 24 Volt DC | 24 Volt DC |
| Pneumatik: | air supply: | 6 bar/ 86 psi | 6 bar/ 86 psi |

* Alle Anlagen sind selbstverständlich auch für größere Plattenformate auf Anfrage erhältlich

* Upon request, units for larger dimensions are also available



KUTTLER
AUTOMATION SYSTEMS

KSL-KUTTLER
AUTOMATION SYSTEMS GmbH
Zeiss-Straße 1
D-78083 Dauchingen

Tel.: +49 7720-9760-0
Fax: +49 7720-9760-50
e-mail: ksl@ksl-kuttler.com
http://www.ksl-kuttler.com