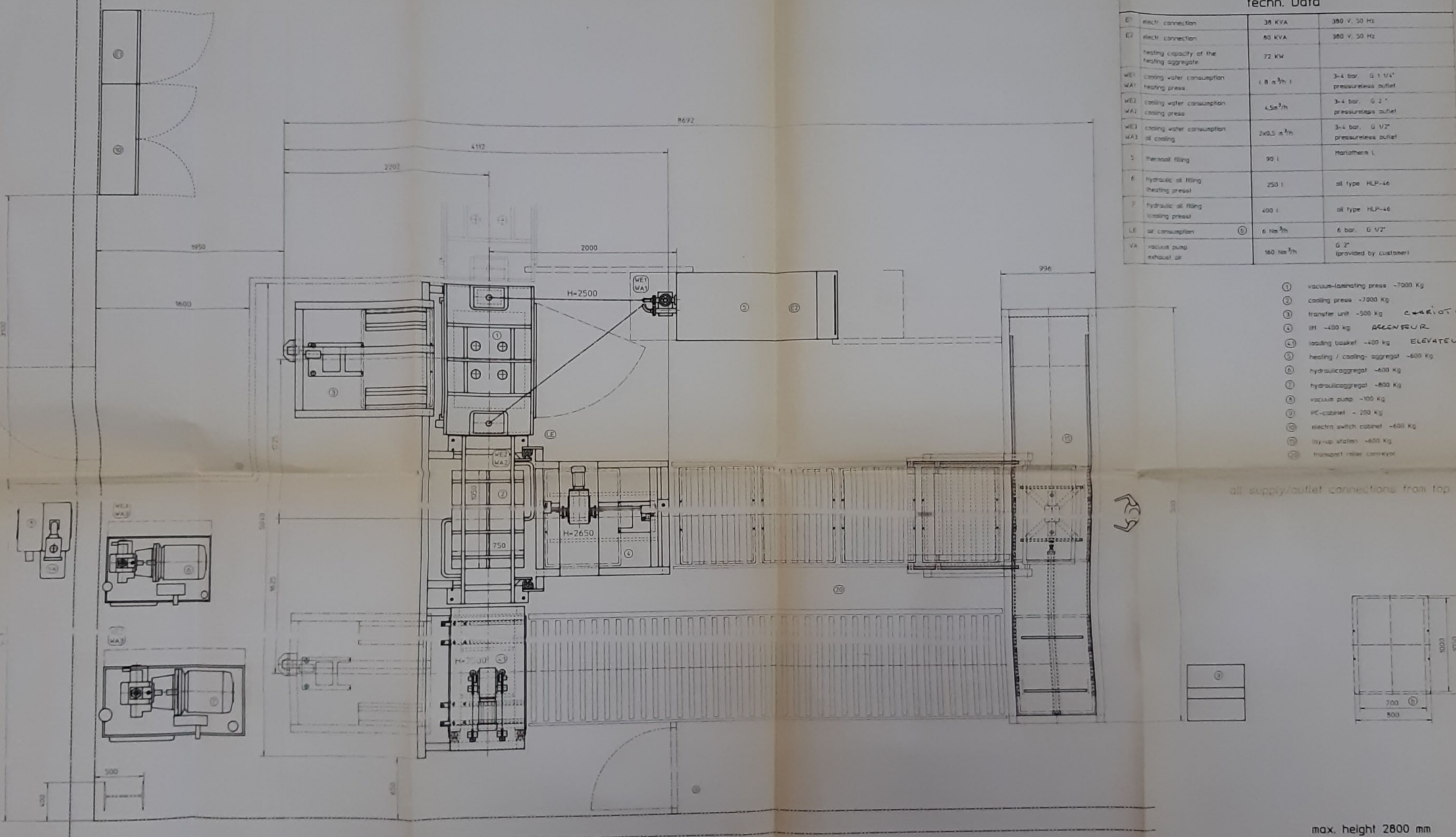


techn. Data

E1	electr. connection	38 KVA	380 V, 50 Hz
E2	electr. connection	80 KVA	380 V, 50 Hz
	heating capacity of the heating aggregate	72 kW	
WE1	cooling water consumption	(0.8 m ³ /h)	3-4 bar, G 1 1/4" pressureless outlet
WA1	heating press		
WE2	cooling water consumption	4.5 m ³ /h	3-4 bar, G 2" pressureless outlet
WA2	cooling press		
WE3	cooling water consumption	2x0.5 m ³ /h	3-4 bar, G 1 1/2" pressureless outlet
WA3	oil ending		
5	thermal filling	90 l	Martolam L
6	hydraulic oil filling	250 l	oil type HLP-46
7	hydraulic oil filling	400 l	oil type HLP-46
LE	air consumption	6 Nm ³ /h	6 bar, G 1/2"
VA	vacuum pump exhaust air	160 Nm ³ /h	G 2" (provided by customer)

- ① vacuum-lamating press -7000 Kg
- ② cooling press -7000 Kg
- ③ transfer unit -500 Kg *CARLOT*
- ④ lift -400 kg *REINFOR*
- ⑤ loading basket -400 kg *ELEVATEUR*
- ⑥ heating / cooling- aggregat -600 Kg
- ⑦ hydraulicaggregat -600 Kg
- ⑧ hydraulicaggregat -800 Kg
- ⑨ vacuum pump -100 Kg
- ⑩ PC-cabinet - 200 Kg
- ⑪ electrn switch cabinet -600 Kg
- ⑫ lay-up station -600 Kg
- ⑬ transport roller conveyor

all supply/outlet connections from top



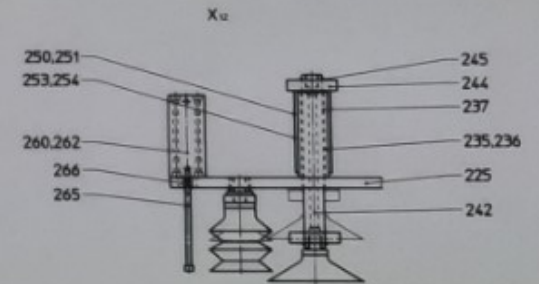
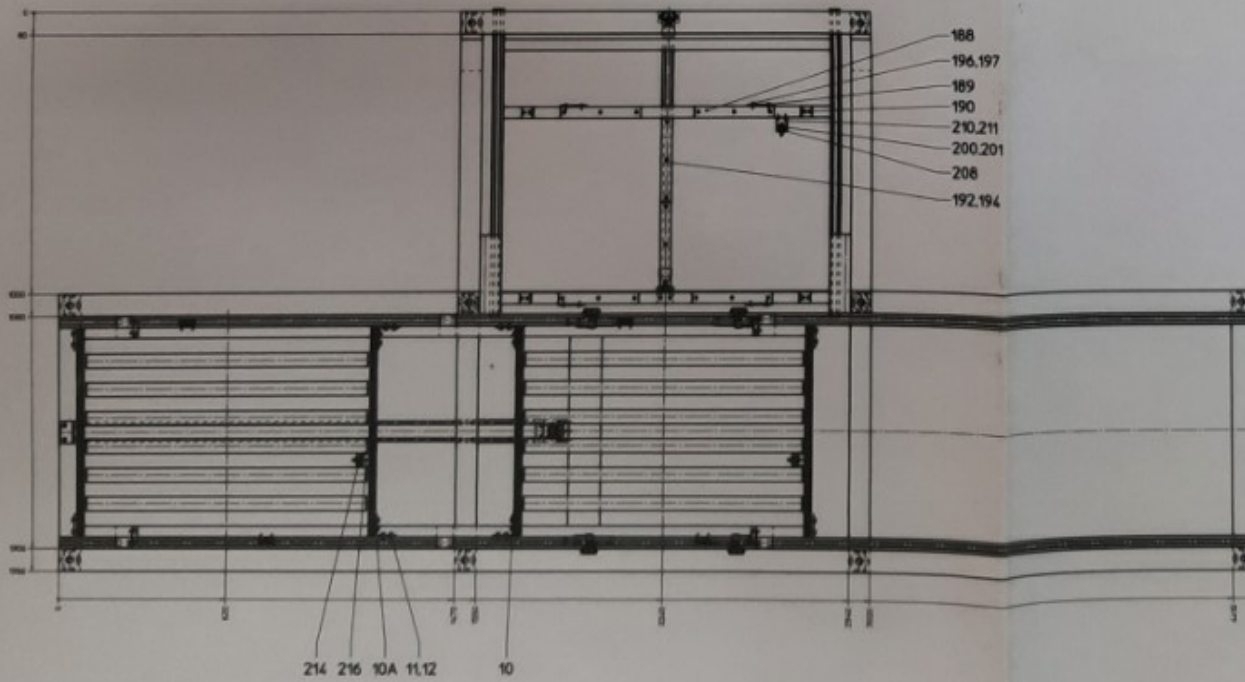
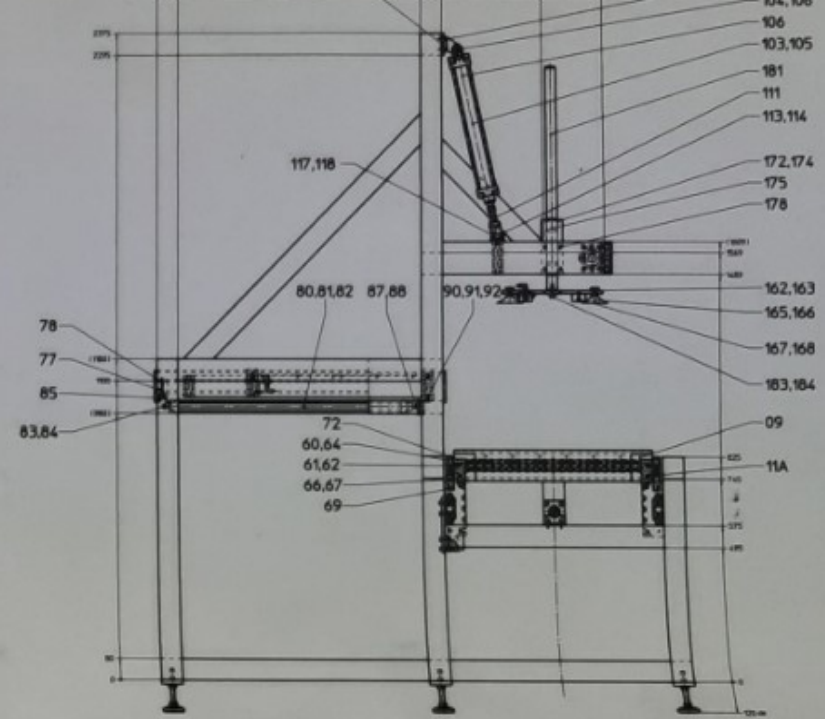
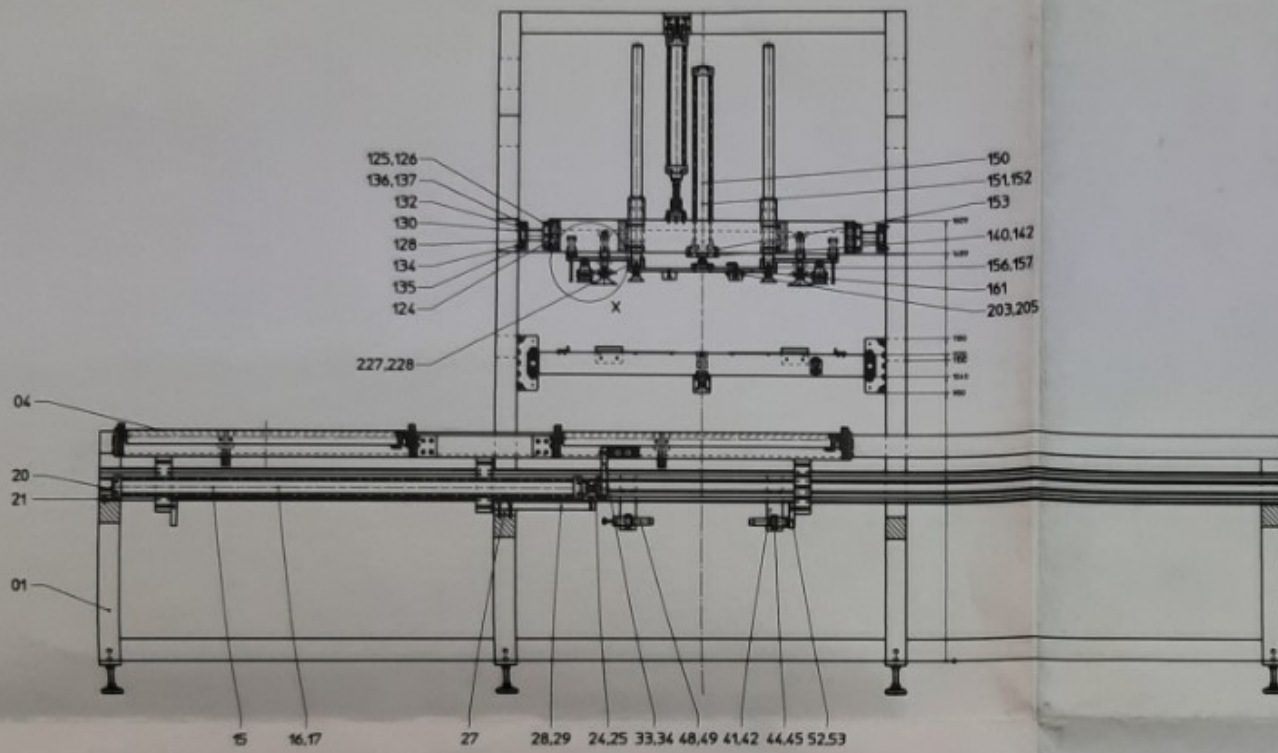
max. height 2800 mm

Design/dimensions subject to change

Proj. No.	0101	Rev.	1
Proj. Name	vacuum lamination system	Proj. No.	9-02725.0
Proj. Date	16.02.54	Proj. Name	modell RMV 100/200/5
Proj. No.		Proj. No.	1:20

LAUFFER
PRESSEN

MASCHINENFABRIK LAUFFER GmbH & Co. KG 7340 Hürtz. a. S.



Rev.	Change	Date	By	Check
1	Initial			
2	Revised			
3	Revised			
4	Revised			
5	Revised			
6	Revised			
7	Revised			
8	Revised			
9	Revised			
10	Revised			

1. Name: LAY-UP-STATION
 2. Drawing No.:
 3. Scale: 1:1
 4. Material:
 5. Heat Treatment:
 6. Surface Treatment:
 7. Drawing Date:
 8. Drawing By:
 9. Drawing Check:
 10. Drawing Date:

5