



international supplies s.r.l.



Resist ontwikkel machine  
30.950.64

## DEVMASTER MKII 24"

# INSTRUCTION AND MAINTENANCE MANUAL

4 x 4 roller

Serial N. -----

02/94



## CONTENTS

1	General specifications
2	Description
3	Installation
4	Operation
5	Maintenance
6	Warranty
7	Drawings and parts lists



## 1 GENERAL

- 1.1. **Parts identification;** there are two different methods for identifying the same part:
- 1.2. Each part appearing in a drawing may be identified, by the drawing number (five digits) followed by the number as shown in the same drawing.  
Example: 03941/7  
This means: part shown as 7 on drawing 03941, i.e. transport wheel.  
This is the method used in the instructions of this manual.
3. Each drawing is followed by a "legend" where each part is described and identified with a pos. number (7 in the above example) as well as a ref. number (46026 in the example).
- 1.4. This is the real number which identifies the part in question. The same part may appear in a different drawing or in a different manual (= machine) where it may be identified with a different pos. number (example drawing 04072 pos. 6 ) but the same ref. number (46026) will be given.

### 1.2. Specifications

Maximum panel width: 660 mm

Maximum panel thickness: 5mm

Minimum panel thickness: 0.1 mm (innerlayers of multilayers)

Conveyor speed: 0-3 m/min

First development:            length of chamber: 1800 mm  
                                 capacity of tank: 350 litres

Second development:        length of chamber 370 mm  
                                 capacity of tank: 110 litres

Workspace: see drawing 03929

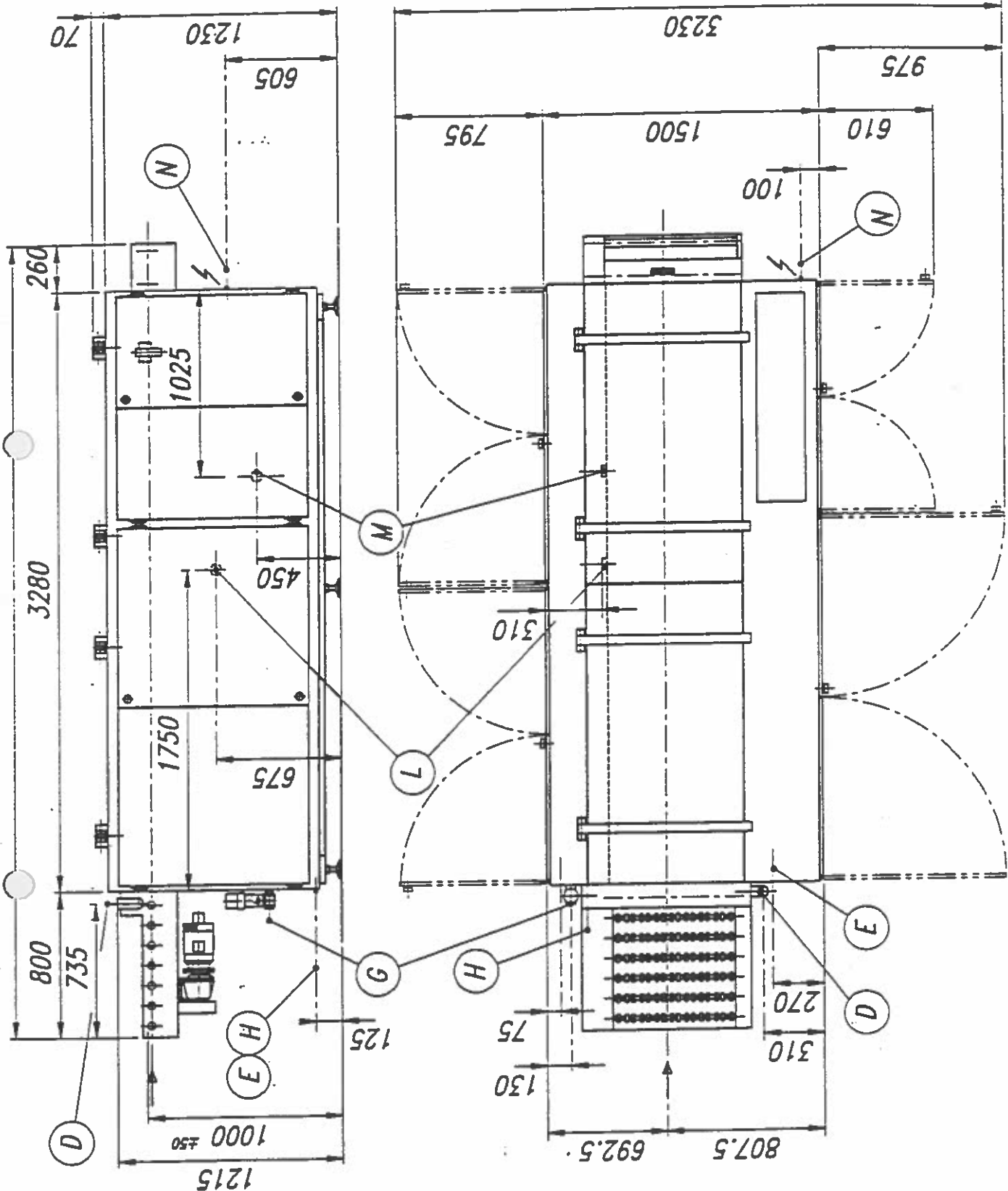
Overall dimensions:        width: 1500 mm  
                                 length: 4340 mm (5000 with drier)  
                                 height: 1300 mm

Approximate net weight: 1600 kg (1900 with drier)

Approximate gross weight: 2000 kg (2300 with drier)



- Electric power supply 380 Volts, threephase, 50 Hz  
(others upon request)
- Water consumption: standard: 2730-3300 litres/hour  
(2 to 3 /cm<sup>2</sup>) ecological: 500 l/h



- D= Exhaust for input conveyor  $\varnothing 60$  mm.
- G= Waste solution outlet  $\varnothing 1''$  G
- N= Power supply standard 28.4 KW (ecological rinse 29.9 KW)
- L= Safety overflow for solution  $\varnothing 60$  mm.
- M= Rinsing water overflow  $\varnothing 60$  mm.
- E= Right hand drain valve for tray  $\varnothing 1''$  G
- H= Left hand drain valve for tray  $\varnothing 1''$  G

