

Different Particulars of

EMMA

Name of the machine	<i>Fixtureless Bare Board Tester</i>
Name of Manufacturer	<i>MicroCraft</i>
Address of Manufacturer	<i>630-2 Tanaka, Okayama 700-0951, Japan Tel : +81-86-241-6681 Fax : +81-86-241-7052</i>
Model	<i>ELX6146</i>
Maximum Test Area	<i>610 × 460 sq. mm</i>
Type of Test Table	<i>Vertical type</i>
Test Side	<i>Both sides</i>
Minimum Board Size	<i>76 × 76 sq. mm</i>
Number of Probes	<i>4</i>
Test Method	<i>Resistance Value Measurement And Phase Difference Measurement</i>
Calibration	<i>4 CCD Cameras (Image processing method provided)</i>
Report Module	<i>External printer</i>
Operation	<i>PC based operation : Pentium, 160 MHz, 32MB Memory, 1GB HDD. Ethernet 10Base-2/-5/-T, 21 inch Color Display</i>
Software	<i>EMMA2000 (MicroCraft) ProbeMaster (Lavenir) Extract (IGI)</i>
Power Supply	<i>AC 200-240V, 1.8 KVA</i>
Over Voltage Category	<i>II</i>
Frequency	<i>50/60Hz</i>
Weight	<i>720 kg</i>
Operating Condition	<i>71-75 °F, 30-70% Relative Humidity Non-condensing, no dust, no vibration</i>
Dimension	<i>Length : 1460 mm</i>
<i>(see brochure)</i>	<i>Width : 680 mm</i>
	<i>Height : Main body : 1741 mm : Adjuster : 80 mm</i>
Stability	<i>The machine has been found not to over turn even though it is tilted about 10 degree on the front from its vertically stable position.</i>

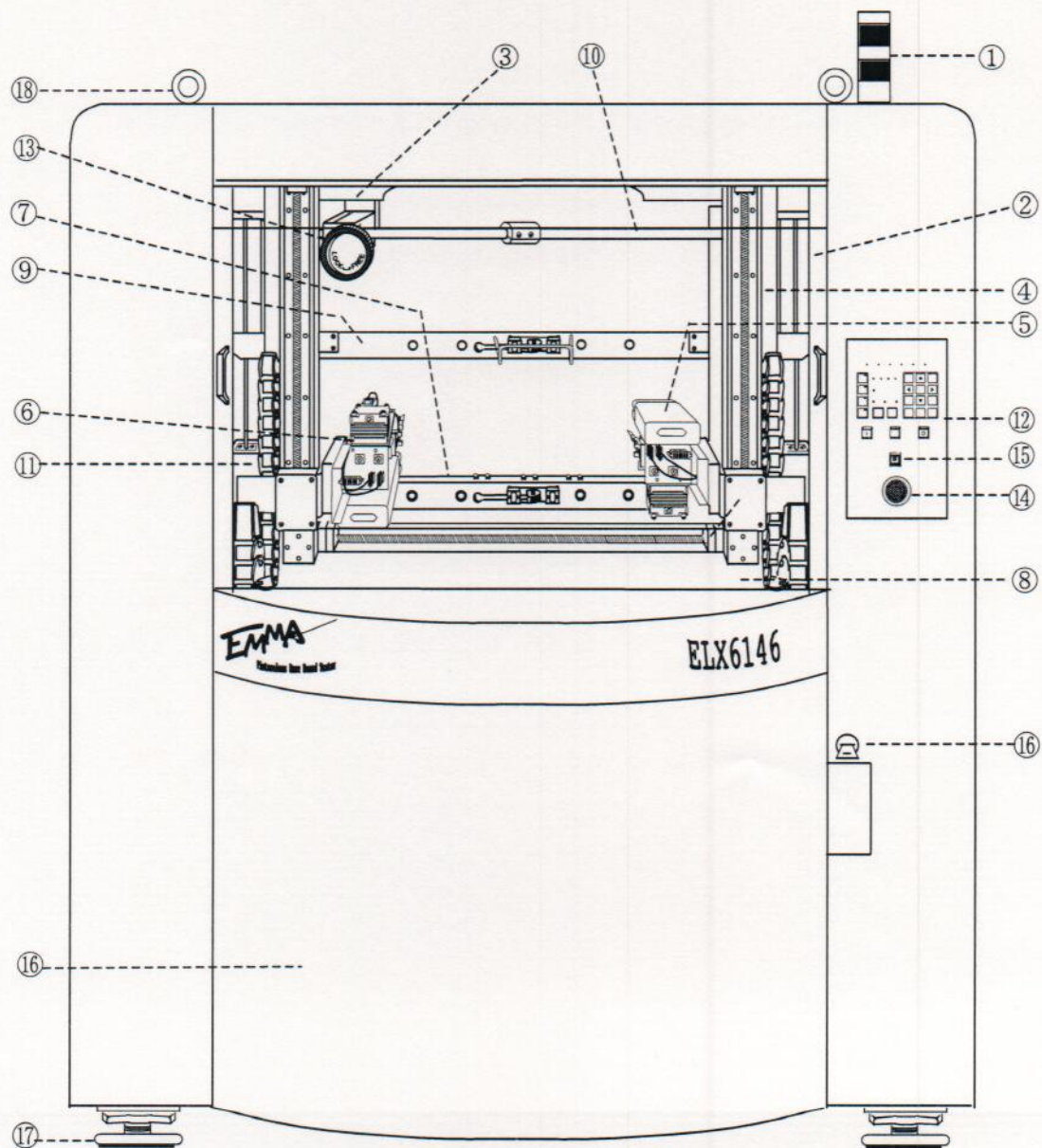


Figure 1. Front of EMMA showing different parts.

Name of the different components :

- | | | |
|----------------|--------------------|-----------------------|
| ① Patlite | ⑦ Lower Clamp | ⑬ Clamp Fixing Knob |
| ② Sliding Door | ⑧ Arm (X axis) | ⑭ Emergency Switch |
| ③ Arm (X axis) | ⑨ Upper Clamp | ⑮ Motor Switch |
| ④ Arm (Y axis) | ⑩ Clamp Moving Rod | ⑯ Cabinet & Door Lock |
| ⑤ Camera | ⑪ Cable Bear | ⑰ Adjuster |
| ⑥ Probe | ⑫ Operation Panel | ⑱ Eye-bolt |

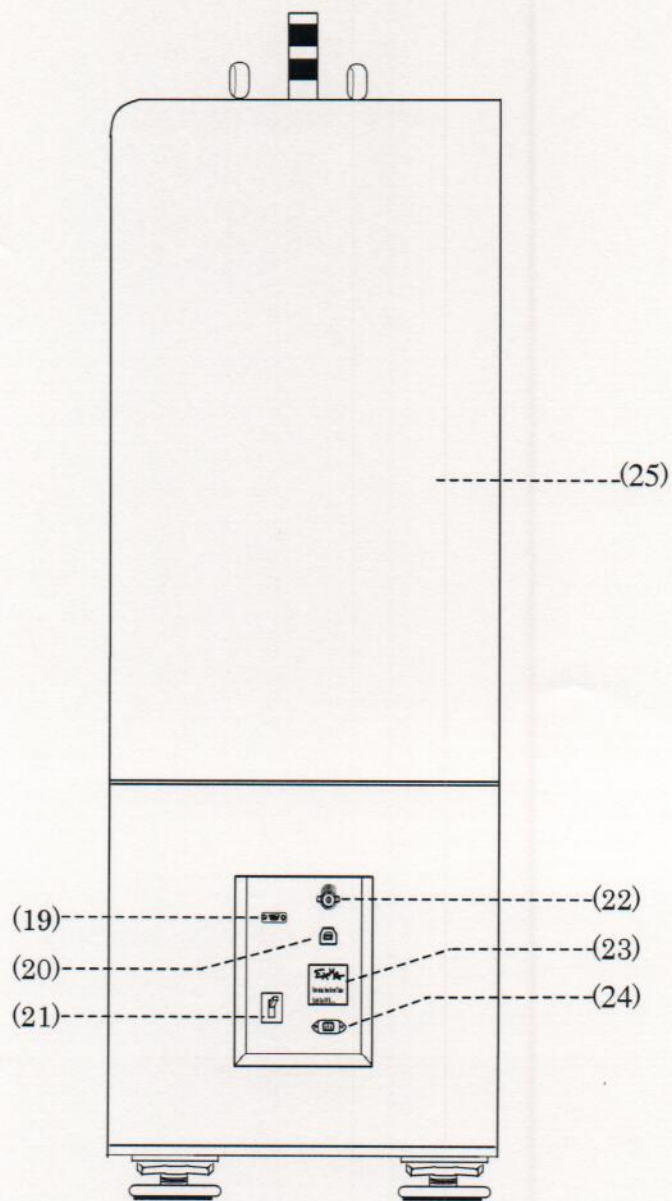


Figure 2. Right side of EMMA.

Name of the components :

- (19) RS232C (Term)
- (20) USB Inlet Port
- (21) Inlet switch
- (22) Video Capture

- (23) Name Plate
- (24) Inlet socket
- (25) Upper Side Cover
on the right

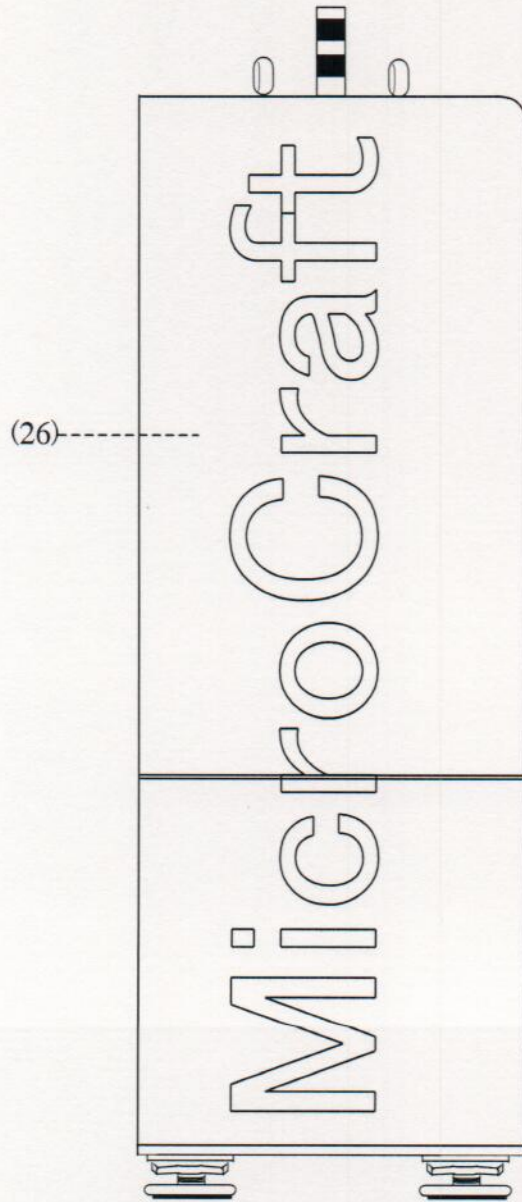


Figure 3. Left side of EMMA

Name of the component :

(26) Upper Side cover on the left

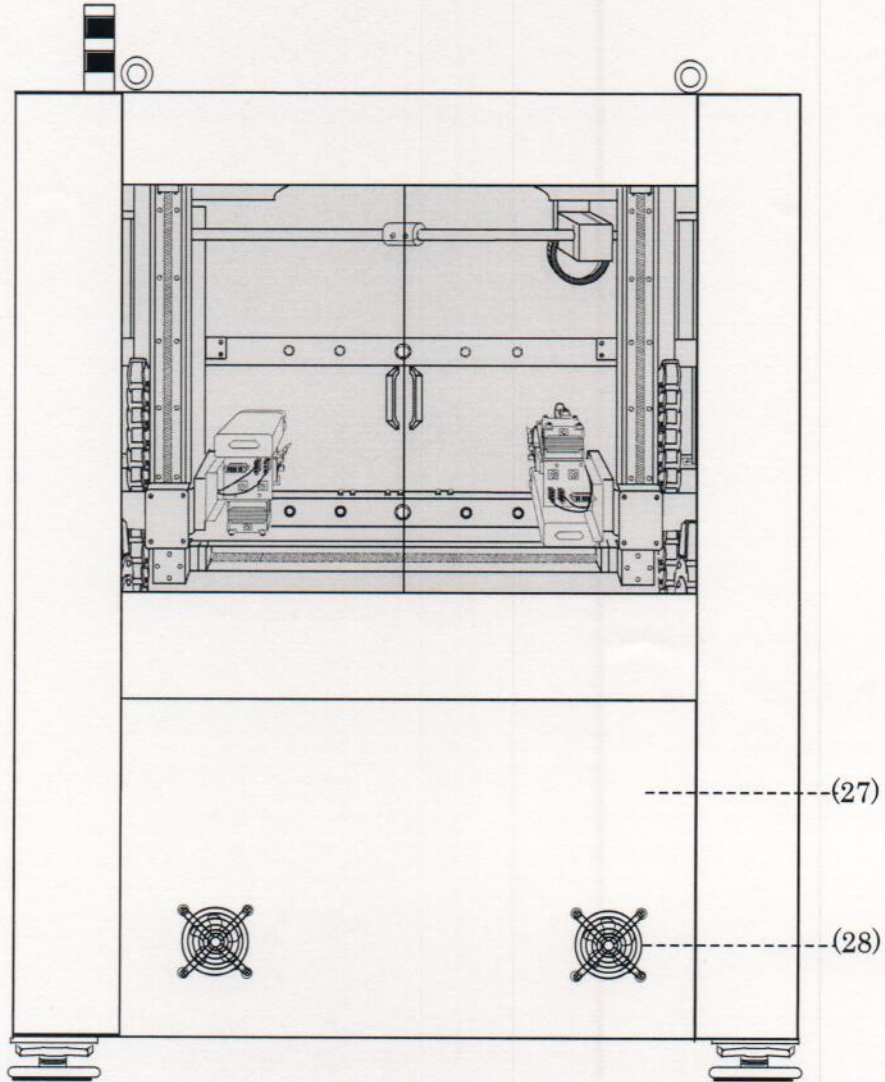


Figure 4. Rear side of EMMA.

Name of the components :

(27) Cabinet (Rear side)

(28) Fan