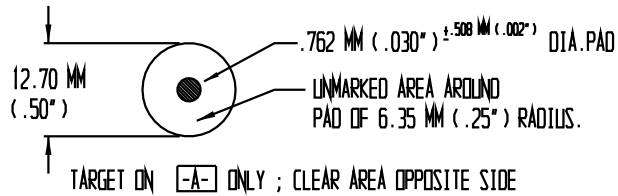
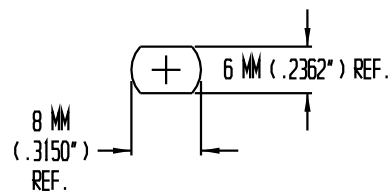


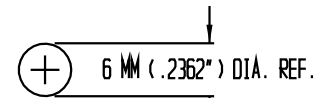
**"T" OPTICAL TARGET (2 REQ'D)**



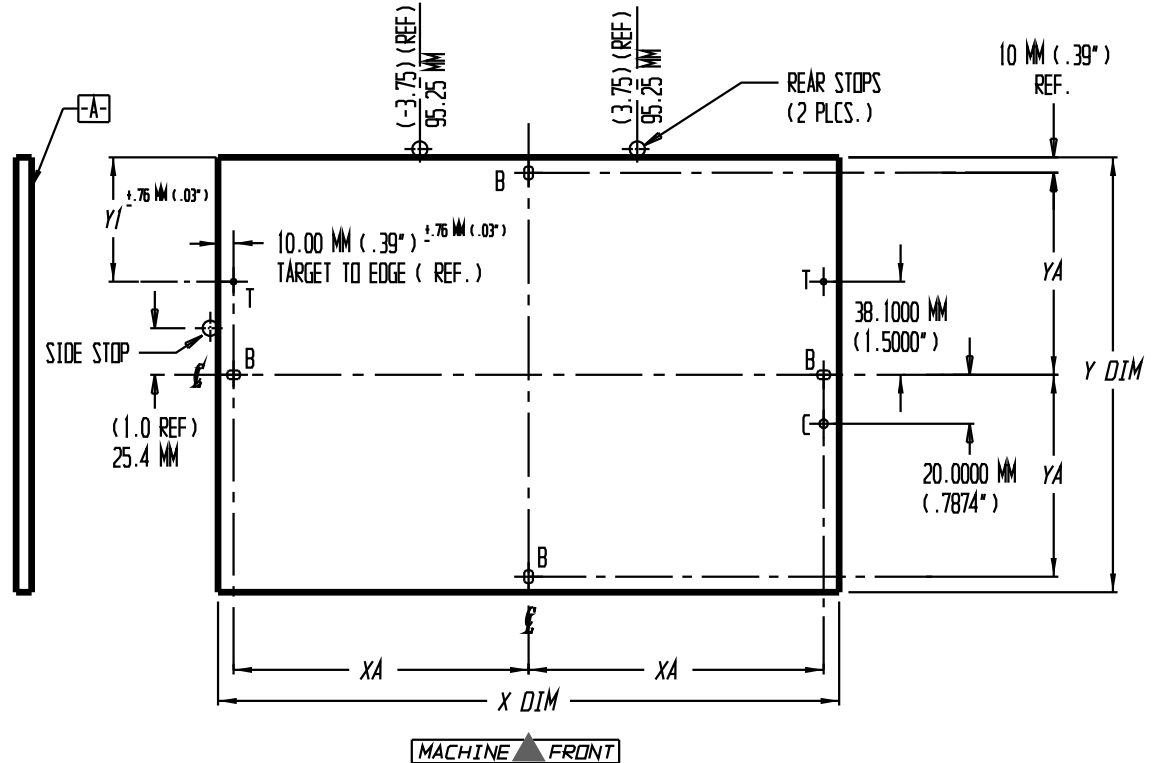
**"B" FLATTED ROUND SLOT (4 REQ'D)**



**"C" ROUND HOLE (1 REQ'D)**



PANEL SIZE X or Y DIM	SLOT LOCATION		TARGET LOC
	XA	YA	YI
<b>311.00 MM</b> (12.24")	<b>145.5000 MM</b> (5.7283")	<b>145.5000 MM</b> (5.7283")	<b>117.40 MM</b> (4.62")
<b>363.80 MM</b> (14.32")	<b>171.9000 MM</b> (6.7677")	<b>171.9000 MM</b> (6.7677")	<b>143.80 MM</b> (5.66")
<b>412.00 MM</b> (16.22")	<b>196.0000 MM</b> (7.7165")	<b>196.0000 MM</b> (7.7165")	<b>167.90 MM</b> (6.61")
440.00 MM (17.32")	210.0000 MM (8.2677")	-----	-----
<b>466.00 MM</b> (18.35")	<b>223.0000 MM</b> (8.7795")	<b>223.0000 MM</b> (8.7795")	<b>194.90 MM</b> (7.67")
488.20 MM (19.22")	-----	234.1000 MM (9.2165")	206.00 MM (8.11")
564.40 MM (22.22")	-----	272.2000 MM (10.7165")	244.10 MM (9.61")
569.60 MM (22.43")	274.8000 MM (10.8189")	-----	-----
<b>598.00 MM</b> (23.54")	-----	<b>289.0000 MM</b> (11.3780")	<b>260.90 MM</b> (10.27")
<b>616.00 MM</b> (24.25")	<b>298.0000 MM</b> (11.7323")	-----	-----
645.80 MM (25.43")	312.9000 MM (12.3189")	-----	-----
722.00 MM (28.43")	351.0000 MM (13.8189")	-----	-----
<b>748.00 MM</b> (29.45")	<b>364.0000 MM</b> (14.3307")	-----	-----



NOTE: 1. DIMENSIONS SHOWN IN BOLD REPRESENT CIRETEC STANDARD PANEL SIZES.

COPYRIGHT MULTILINE TECHNOLOGY NOTICE: PROPRIETARY INFORMATION PROPERTY OF MULTILINE TECHNOLOGY INFORMATION CONTAINED HEREIN IS NOT DISCLOSED TO OTHERS WITHOUT PRIOR WRITTEN APPROVAL OF MULTILINE TECHNOLOGY.	TOLERANCES:	DR. BY: P. CERRITO	a division of LENKETT IND. INC. 400 Brookhollow rd. Farmingdale, N.Y. 11735
	.xx ± .51 MM (.02")	DATE: 1/18/99	
	.xxxx ± .0254 MM (.0010")	CHKD:	
	CUSTOMER: CIRE(SPEC)	APPD:	PART NAME: OPE PANEL LAYOUT SPECIAL
JOB NUMBER: OPE-0352	SIZE: B	DWG. NO.: APD-0352	REV: A